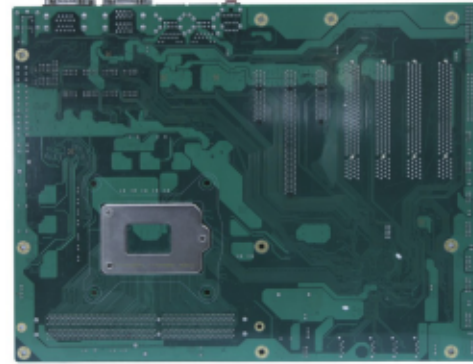
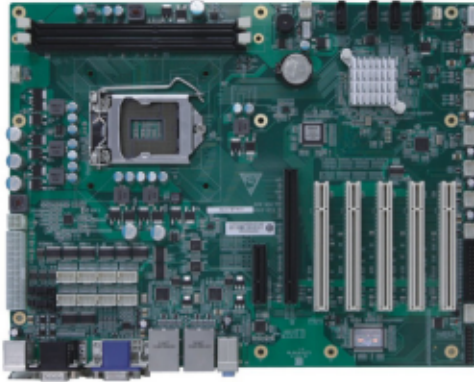


ECO-1816

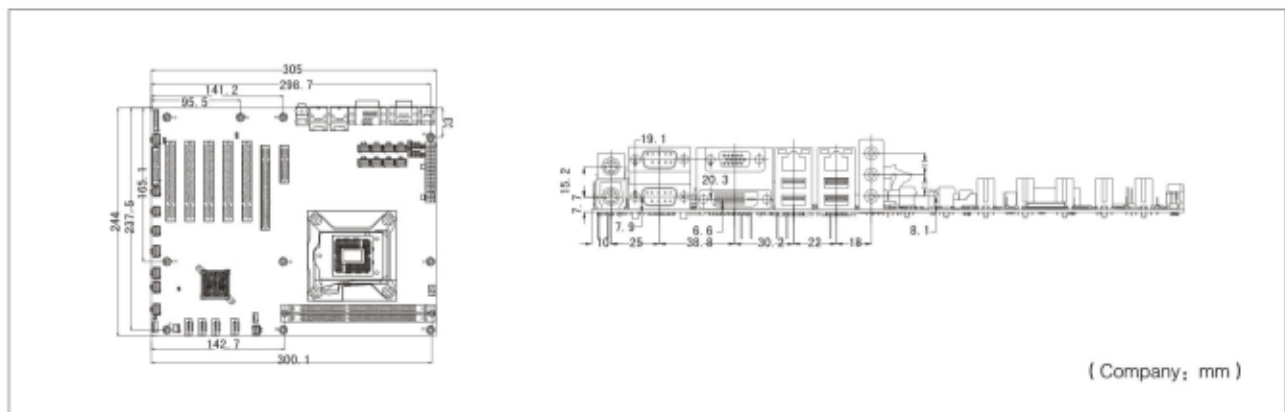
ATX Single Board



Features:

- ◆ Supports Ivy Bridge/Sandy Bridge LGA1155 dual/quad-core CPU
- ◆ Supports 1333/1066MHz DDR3 memory, up to 16GB memory capacity
- ◆ VGA+DVI-D display function
- ◆ Supports 10 x USB2.0, 4 x USB3.0 and 10 x COM port
- ◆ Supports PCIE X16, PCIE X1, PCI bus expansion

Product size chart



Specifications

| | |
|-----------------------|--|
| CPU | Supports Ivy Bridge/Sandy Bridge core LGA1155 dual/quad-core CPU |
| Chipset | H61chipset |
| Memory | Provides 2 x 240Pin standard DDRIII 1066/1333MHz DIMM memory slot, total up to 16GB, single slot max 8GB |
| Display port | Supports VGA+DVI-D, VGA1: 2048 x 1536, DVI-D: 1920 x 1200 |
| Audio | Adopts HDA standard, supporting MIC-IN/LINE-IN/LINE-OUT |
| LAN | Provides 2 x 10/100/1000Mbps LAN port |
| Storage | Provides 4 x SATA 2.0 interface |
| I/O port | 10 x COM port, COM1 & 2 support RS-232/422/RS-485 optional/10 x USB2.0 port; 4 x USB3.0 port (compatible with USB2.0)/1 x 8bit digital I/O port/1 x TPM/TCM port/ 1 x LPT port (pin header port, which can be brought out by cables) |
| Expansion bus | 5 x PCI, 1 x PCI_Ex16, 1 x PCI_Ex1 (x4 connector) |
| Operating temperature | -10°C ~ 60°C; humidity: 5%~95% (non-condensing) |
| Storage environment | -20°C ~ 80°C; humidity: 5%~95% (non-condensing) |
| Watchdog | 255 levels, programmable by second/minute, timeout interrupt or system reset |
| Power supply | Standard ATX power supply |
| Dimensions (LxWxH) | 305mm (L) x 243.8mm (W)x36mm(H) |

Ordering Information

| Part Number | Model Number | Description |
|-------------|---------------------------|---|
| 0030-020261 | EC0-1816V2NA(B)-6COM | ATX structure single board /H61 chipset/supports Ivy Bridge, Sandy Bridge core LGA1155 dual/quad-core CPU/ 2x240PIN 1600/1333/1066MHz DDR3 memory slot, total up to 16GB/VGA+DVI-D/2 x 1000Mbps LAN port/4 x SATA 2.0/10 x USB2.0/6 x COM port/5 x PCI/1 x PCIEx16/1 x PCIEx1/1 x LPT port/1 x 8BIT GPIO/1 x TPM/1 x Audio port/-10°C ~ 60°C |
| 0030-020251 | EC0-1816V2NA(B)-10COM | ATX structure single board /H61 chipset/ supports Ivy Bridge, Sandy Bridge core LGA1155 dual/quad-core CPU/2 x 240PIN 1600/1333/ 1066MHz DDR3 memory slot, total up to 16GB/VGA+DVI-D/2 x 1000Mbps LAN port/4 x SATA 2.0/10 x USB2.0/10 x COM port/5 x PCI/1 x PCIEx16/1 x PCIEx1/1 x LPT port/1 x 8BIT GPIO/1 x TPM/1 x Audio port/-10°C ~ 60°C |
| 0030-020371 | EC0-1816V2NA(B)-10COML | ATX structure single board/H61 chipset/supports Ivy Bridge, Sandy Bridge core LGA1155 dual/quad-core CPU/2 x 240PIN 1600/1333/1066MHz DDR3 memory slot, total up to 16GB/VGA+DVI-D/2 x 1000Mbps LAN port/4 x SATA 2.0/10 x USB2.0/10 x COM port/5 x PCI/1 x PCIEx16/1 x PCIEx1/1 x LPT port/1 x 8BIT GPIO/1 x TPM/1 x Audio port/-10°C ~ 60°C/support WIN SERVER 2008 |
| 0030-021071 | EC0-1816V2NA(B)-B65-10COM | ATX structure single board/Intel B65 chipset/supports Intel® Ivy Bridge/Sandy Bridge LGA1155 CPU/2xDDR3 DIMM memory slot, total up to 16GB/VGA+DVI-D/4 x SATA/2 x 1000Mbps LAN port/11 x USB2.0/10 x COM port(2 support 232/422/485 optional)/1xLPT/2x PS/2/ HD Audio/1 x 8BIT GPIO/ 4 x PCI/1 x PCIEx4/1 x PCIEx1/1 x PCIEx16/1 x TPM/TCM / ATX power supply |
| 0030-021061 | EC0-1816V2NA(B)-B65-6COM | ATX structure single board/Intel B65 chipset/supports Intel® Ivy Bridge/Sandy Bridge LGA1155 CPU/2xDDR3 DIMM memory slot, total up to 16GB/VGA+DVI-D/4 x SATA/2 x 1000Mbps LAN port/11 x USB2.0/6 x COM port(2 support 232/422/485 optional)/1xLPT/2x PS/2/ HD Audio/1 x 8BIT GPIO/ 4 x PCI/1 x PCIEx4/1 x PCIEx1/1 x PCIEx16/1 x TPM/TCM / ATX power supply |