



IPC-710

Industrial 4U Rack Mount PC

- Support PICMG 1.0 1.3, ATX, Micro ATX board
- Support anti-vibration HDD bay
- Faceplate: 2*USB, switch, reset, LED, HDD
- High EMC performance
- Drawable dustproof net

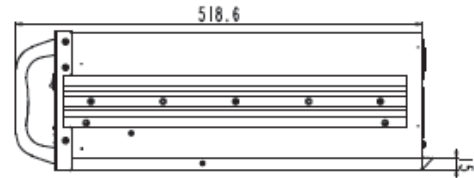
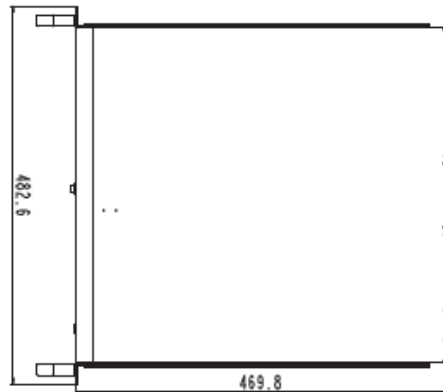
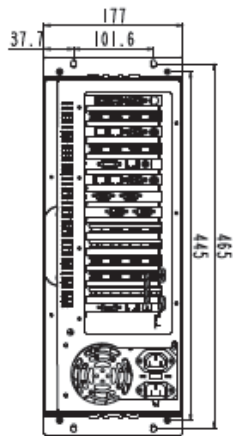


Specifications

Mainboard		PICMG 1.0 PICMG 1.3 EPI 2.0 EPE ATX Micro-ATX
Backplane		10 slots PICMG 1.0 backplane 14 slots PICMG 1.0 backplane 10 slots PICMG 1.3 backplane 13 slots EPI 2.0 backplane 10 slots EPE backplane
I/O		Front: 2*USB 2.0, ATX switch, Rest, Power/HDD indicator, Back: based on different mainboard
Storage	Hard disk	2*3.5" drawable HDD (Anti-vibration); 1*3.5" drawable HDD(non anti-vibration)
	Optical drive	1*5.25" CD-ROM bay
Working environment		0~50℃; 5~90%
Storage environment		-20~60℃; 5~90%
Power		PS2 ATX power or PS2 AT power
Dimension (W*H*D)		482*177*470.4 mm
N.W		About 11.35kgs (not including accessories & packaging)



Dimension



(单位: mm)

Unit:mm

Ordering Information

Part Number	Model Number	Description
0020-062081	IPC-710/EC0-1816V2NA-6COM/250W	4U 19" Barebone system /ATX EC0-1816V2NA(C)-6COM / No CPU , support LGA1155 Intel Core Ivy Bridge Sandy Bridge processor, Intel Pentium or Celeron G series processor/ No memory , support 2 * 800/1066M/1333M DDR3 slot ,up to 16GB/ No HDD /ATX 250W/ No optical drive /with heat sink/VGA+DVI-D/2*Gbe/4*SATA2.0/10*USB2.0/6*COM/5*PCI/1*PCIe x16/1*PCIe x1(x4connector)/1*LPT/1*8bit GPIO/1*TPM/1*Audio
0020-062091	IPC-710/EC0-1817V2NA-H81-6COM/250W/	4U 19" Barebone system /ATX EC0-1817V2NA-H81-6COM / No CPU , support LGA1150 4 th Gen i3/i5/i7 core processor, Intel Pentium ,Celeron processor/No memory, support 2*1333/1600MHz DDR3 slot, up to 16GB/ No HDD /ATX 250W/ No optical drive /with heat sink/ VGA+DVI-D/2*Gbe/4*SATA/2*USB 3.0/8*USB 2.0/6*COM/4*PCI /1*PCIe x16/2*PCIe x1(x4 connector)/1*LPT/1*8bit GPIO/1*TPM/1*Audio

