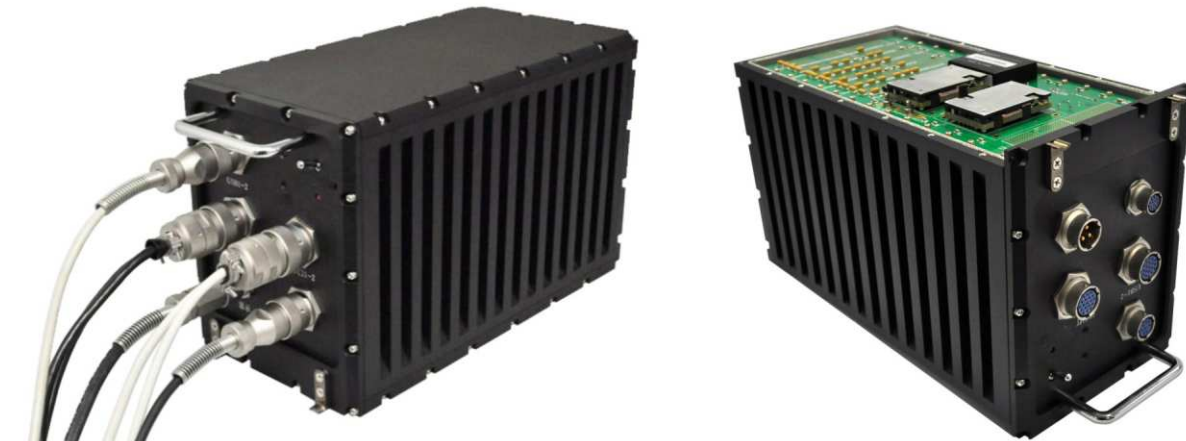


CPC-3406-ATR

Rugged 3U conduction-cooled CPCl System



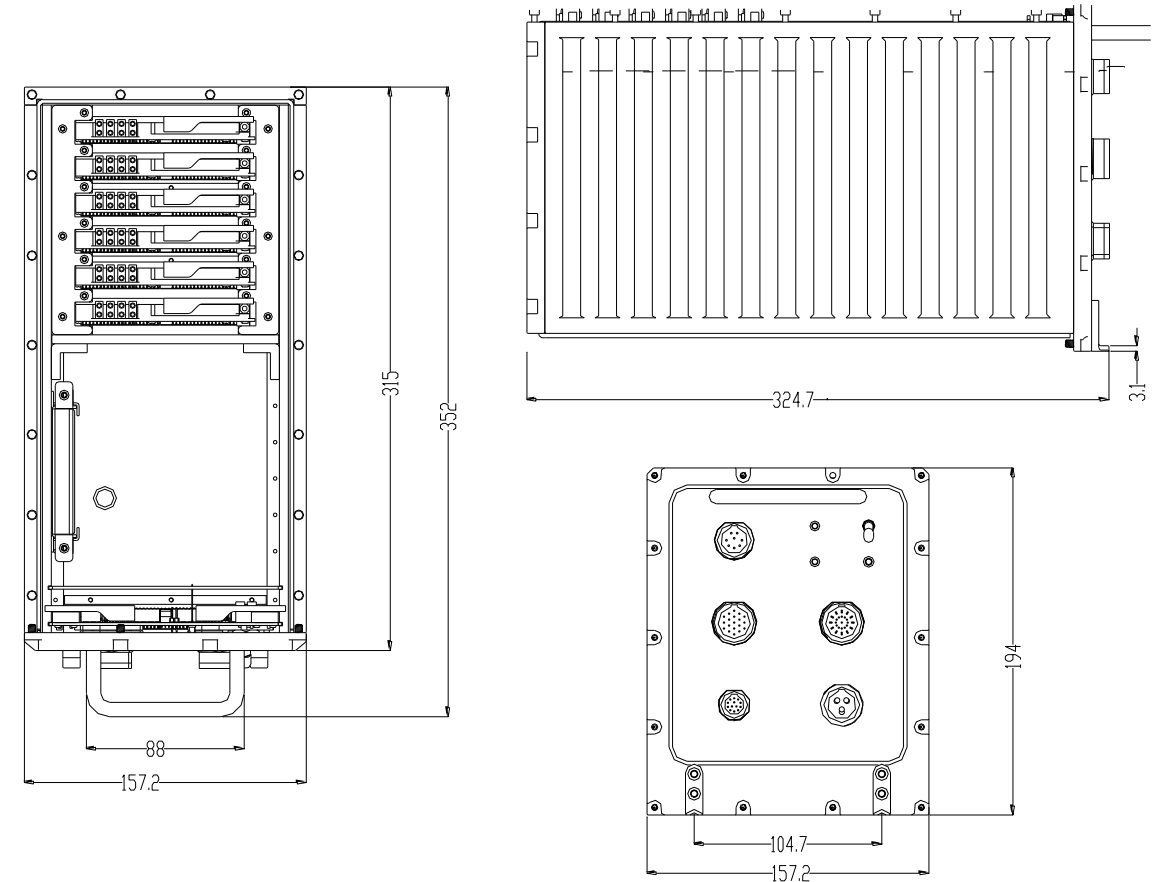
Features

- 18~36V DC wide-voltage input;
- All the I/O ports are aviation connectors, firm and reliable;
- 1 x VGA, 2 x COM, 2 x LAN, 2 x USB and 1 x DC power input;
- 1 x fool-proof power switch.

Specifications

Backplane	CPC-9306-MIL: 1 x system slot, 5 x expansion slot; 32bit/33MHz CompactPCI bus
IO ports	1 x VGA, 2 x COM, 2 x LAN, 2 x USB and 1 x DC power input
Operating temperature	-40℃~85℃; 5%~90% (non-condensing)
Storage temperature	-45℃~90℃; 5%~90% (non-condensing)
Power supply	1 x 250W CPCl power supply, AC input, with over-voltage and short-circuit protection
Mechanical specifications	Anti-vibration: meets ANSI/VITA 47 4.4.2 Vibration Level 2; The V2 level connectors should be able to withstand the vibration as below, one hour for each axis: 5Hz~100Hz PSD, increasing by 3dB/octave 100Hz~1000Hz PSD=0.04g2/Hz 1000Hz~2000Hz PSD, decreasing by 6dB/octave Anti-shock: meets ANSI/VITA 47 4.5.1 Shock Level OS1; The connecting parts should be able to withstand the shock as below: Three-axis 20g, 11ms, half sine pulse; or 20g, 11ms, final peak sawtooth shock pulse.
Dimensions (H x W x D)	194mm x 352mm x 157.2mm 194mm x 315mm x 157.2mm (excluding the handle)

Dimensions



Ordering Information

Part Number	Model Number	Description
0020-052970	CPC-3406-ATR	3U CPCl ATR chassis/1 x system slot/5 x expansion slot/300W DC power/18V~36V DC power input/IO aviation connector/VGA/2 x COM/2 x LAN/2 x USB/DC power input